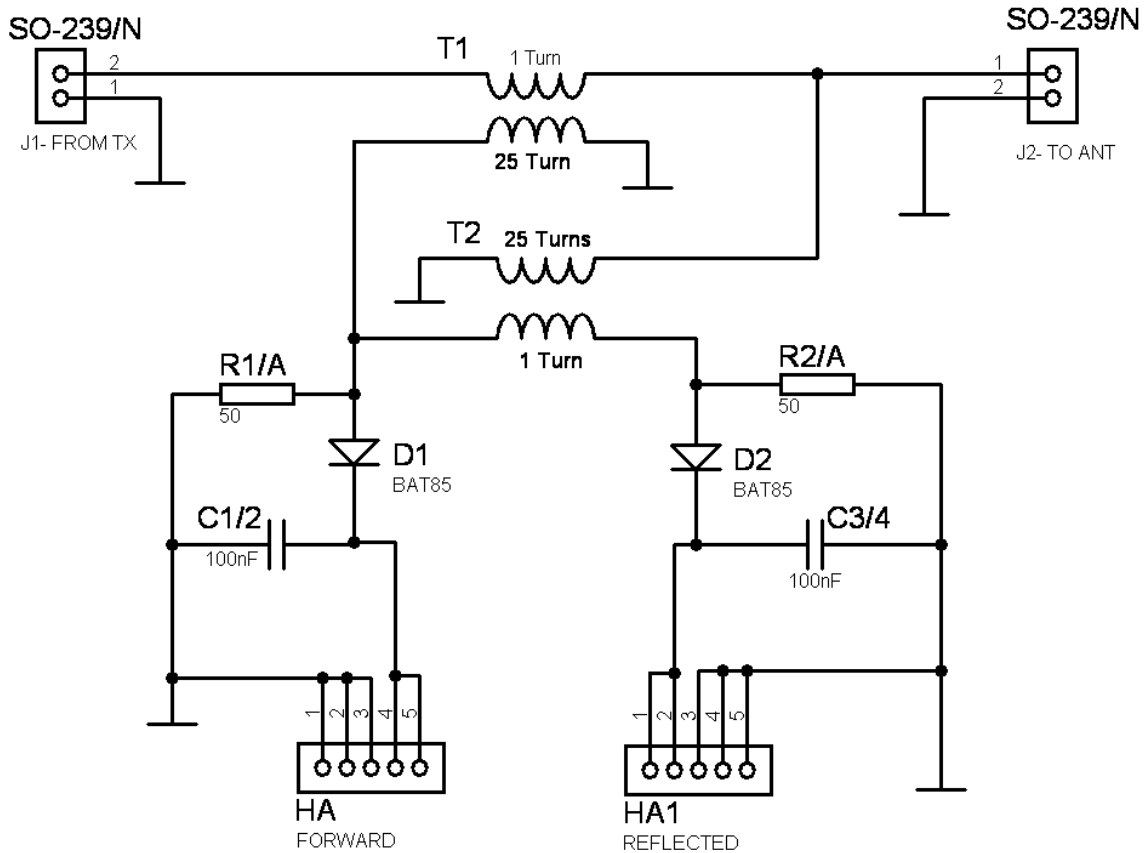




Schematic & Parts List: Micro Controller LCD 100W SWR Meter HF Bridge

SWM HF BRIDGE PICK-UP Board Toroid Winding & Assembly Guide

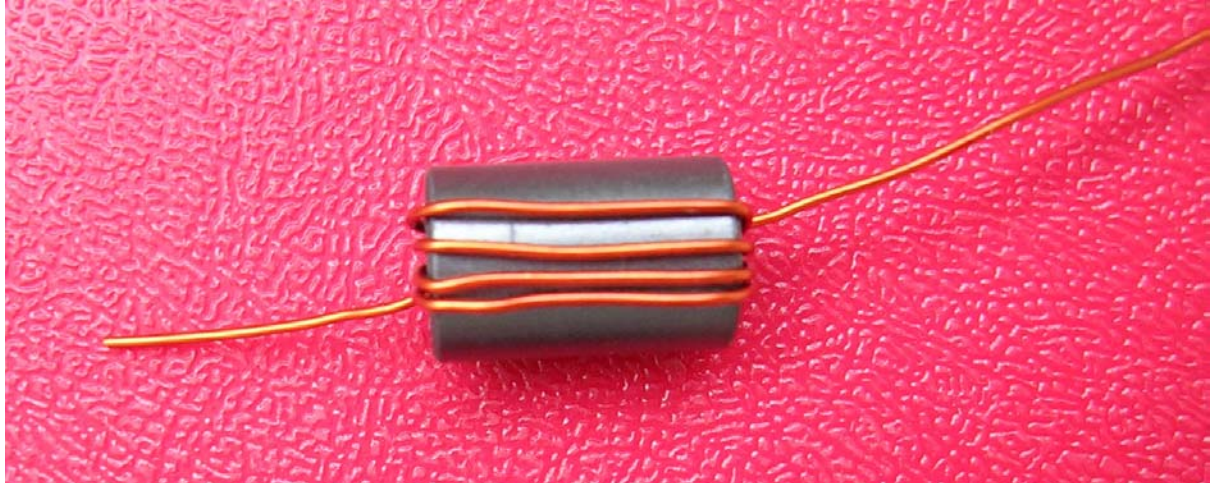
Fox Delta HF-BRIDGE Design: Dinesh Gajjar <http://www.foxdelta.com>



SWM HF BRIDGE PICK-UP Board Parts List:

Quantity	Check	Part Detail
1		FD-BRIDGE-HF Double Side PTH Board
2		Toroidal Tube Core #43
2		BAT85 Diodes (D1,2)
4		100 ohms Resistors 1/4W (R1. R1A, R2. R2A)
4		0.1uf Poly Capacitors (C1, 2, 3, 4)
1Mtr		Copper Wire #28

Winding of T1 Pick-up Toroid:



Start winding from left inside to fill entire half top of toroid

Winding of T2:

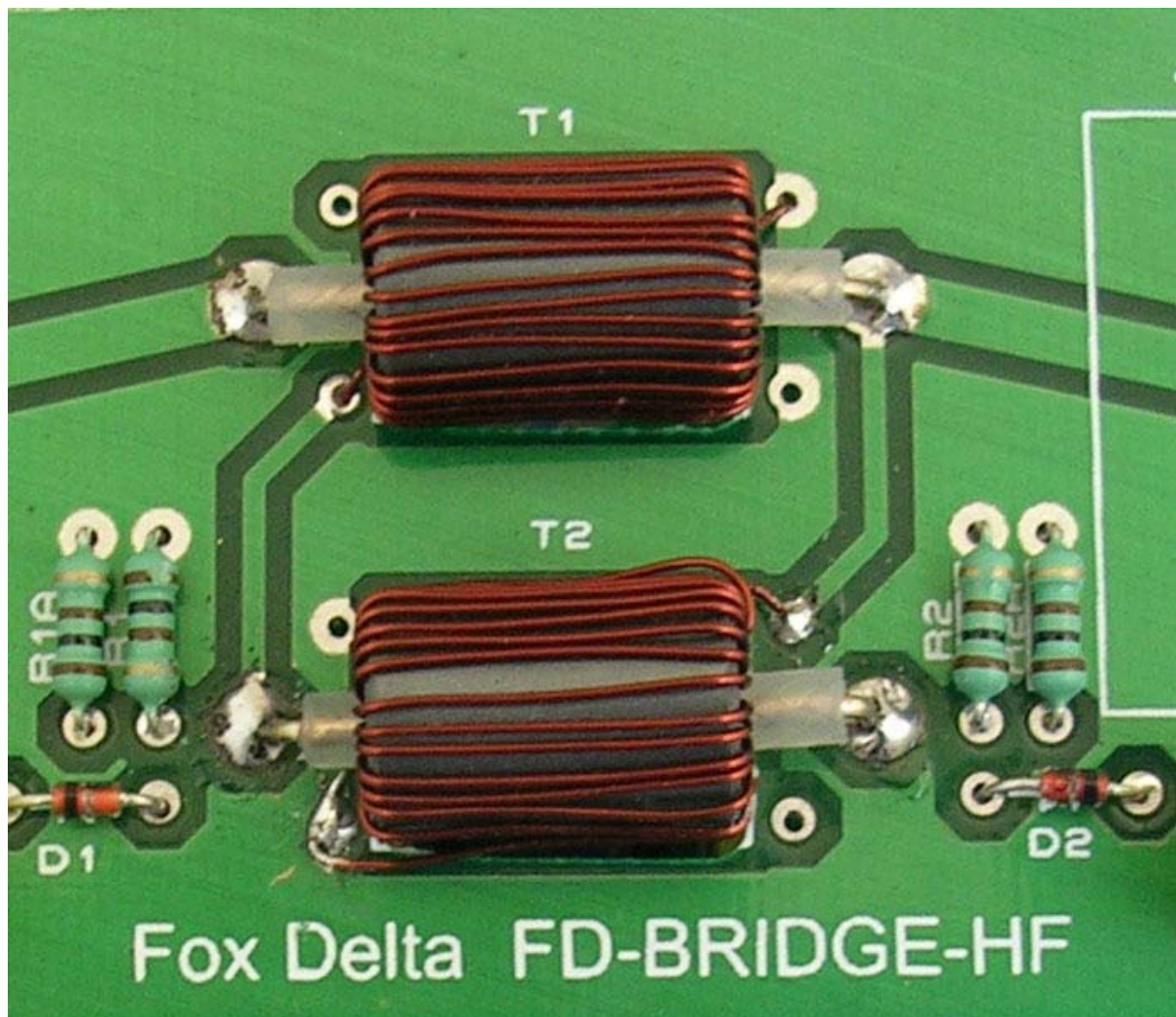


Winding start from left but goes over the toroid to inside. Wind entire top half of the toroid.

Above scheme is related to specific PCB design used in this project only. If you use your own design of PCB, phasing may be achieved by using similar wound toroids.

I have used thicker wire for better picture presentation.

Final assembly of T1 & T2:



Dinesh Gajjar
18th July 2009

For more details, please visit Project Page: <http://www.foxdelta.com>